

HUMMER CDS 2.2 Carbon Deposition System

Energy Dispersive X-Ray Analysis
Carbon Shadowing



CARBON DEPOSITION SYSTEMS FOR X-RAY ANALYSIS

Hummer® carbon deposition system is designed to produce accurate, repeatable, carbon coating is less than 2 minutes

Complete system in one cabinet
Pump, Power and Control

HUMMER® IS A REGISTERED TRADEMARK OF
ANATECH USA
CARBON DEPOSITION SYSTEM

Operation

The **Hummer CDS 2.2** deposits thin films of carbon quickly and conveniently.

Carbon is the preferred material for the conductive coating of SEM specimens for energy dispersive X-ray analysis, since the carbon coating does not interfere with the analysis.

All of the carbon rods are pre-sharpened allowing repeat settings for consistent coatings run to run. The carbon coating system evaporates a point source of carbon centered between two electrodes with up to 100 amps of electrical current.

Safety interlocks ensure operator and machine safety.

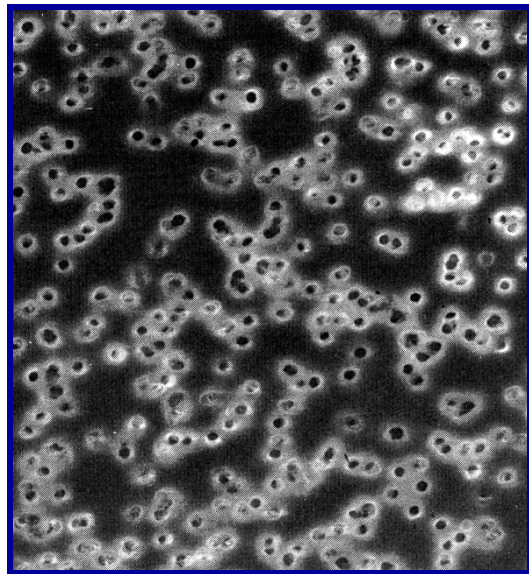
Samples up to 3.25" diameter or 12 microscope stubs can be coated in a single operation.

Specifications

Input Power - 115 VAC, 50-60 Hz, 6
amps
Power Supply - 10 Volts, 0-100 amps
Dimensions - 22"W x 20"D x 14"H

Optional Items

Pre-Sharpended carbon rods: 20 rods per
package.
Large Pyrex Chamber: 6" x 6"
with 5" diameter capacity stage, gaskets,
base plate and top plate electrode



Carbon Coated Nucleopore Filter

Photo courtesy of :
Center for Microanalysis, University of Maryland

CALL ANATECH USA TODAY TO DISCUSS YOUR APPLICATION
1-800-390-4449

2947 WHIPPLE ROAD
UNION CITY, CA 94587
Tel: 510-401-5990 Fax: 510-401-5994

ANATECH USA WEB SITE: www.anatechusa.com

EMAIL: info@anatechusa.com