

HUMMER CEA 2.2 Carbon Evaporation Accessory

The Hummer CEA 2.2 is designed to provide accurate, repeatable carbon coatings in less than two minutes.

Applications:

- X-Ray Microanalysis
- Carbon Shadowing
- Pre-coating prior to metal coating



Coating Head Detail

Evaporate Carbon using your Hummer sputter coater. Available for Hummer models 6.2 and 6.6



Hummer model 6.2 sputter coater shown with CEA and thickness monitor

HUMMER ® IS A REGISTERED TRADEMARK OF
ANATECH USA
CARBON EVAPORATION ACCESSORY

Operation

The **Hummer CEA 2.2** deposits thin films of carbon quickly and conveniently.

Carbon is the preferred material for the conductive coating of SEM specimens for energy dispersive X-ray analysis, since the carbon coating does not interfere with the analysis.

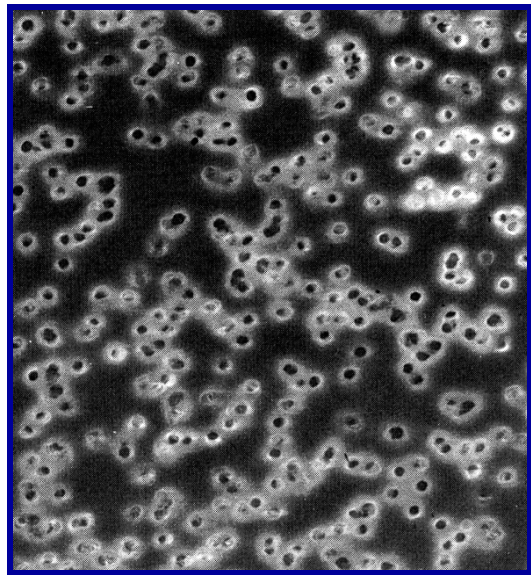
All of the carbon rods are pre-sharpened allowing repeat settings for consistent coatings run to run. The carbon coating system evaporates a point source of carbon centered between two electrodes with up to 100 amps of electrical current.

Safety interlocks ensure operator and machine safety.

Samples up to 3.25" diameter or 12 microscope stubs can be coated in a single operation.

Specifications

Input Power - 115 VAC, 50-60 Hz, 6
amps
Power Supply - 10 Volts, 0-100 amps
Dimensions - 11"W x 20"D x 14"H
Weight - 45 lbs
Includes: 20-Presharpened carbon rods and



Optional Items

Pre-Sharpended spare carbon rods,
20 rods per package.

Carbon Coated Nucleopore Filter

Photo courtesy of :
Center for Microanalysis, University of Maryland

CALL ANATECH USA TODAY TO DISCUSS YOUR APPLICATION
1-800-390-4449

2947 WHIPPLE ROAD
UNION CITY, CA 94587
Tel: 510-401-5990 Fax: 510-401-5994

ANATECH USA WEB SITE: www.anatechusa.com

EMAIL: info@anatechusa.com