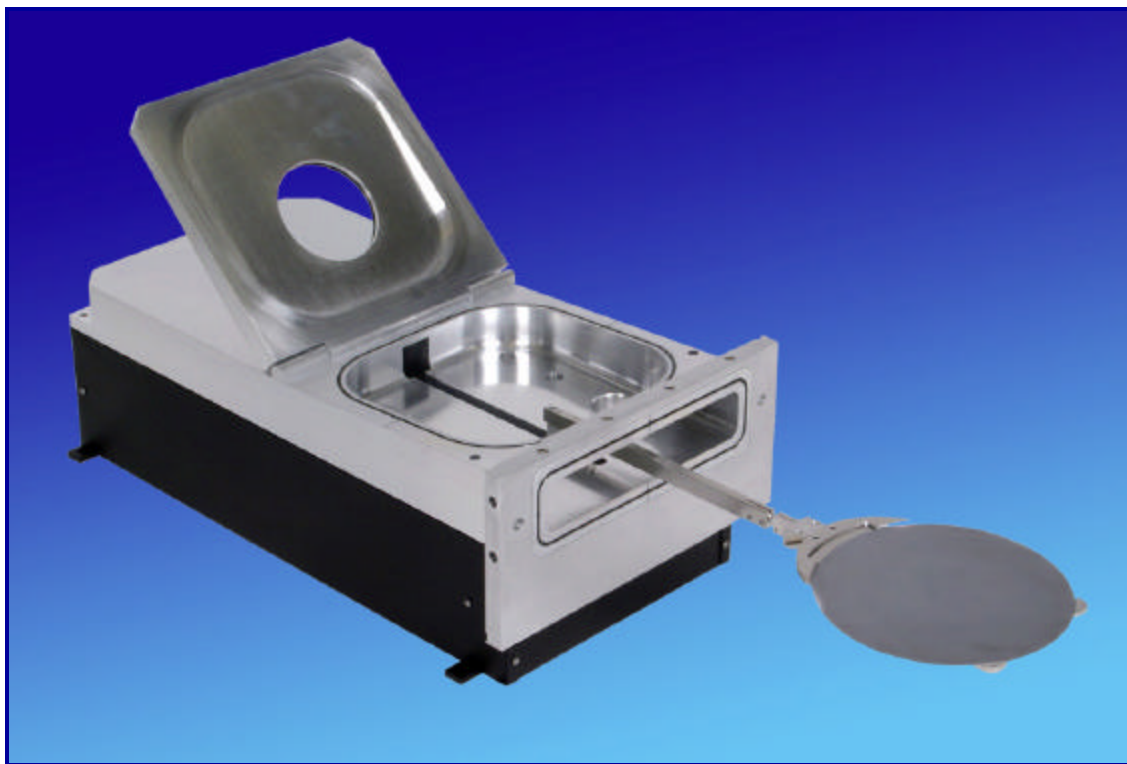


SYSTEM ACCESSORIES

TEAM-MATE 200 / 300 LOAD LOCK



LOAD LOCK SPECIFICS:

Low Particulate

200 mm / 300 mm

Linear Travel: 12-inches / 18.3-inches

Rectangular Gate Valve: Provides chamber isolation

Sample Diameter: Up to 200-mm & 300-mm maximum

Motorization Controls: Pushbutton, RS232 or digital I/O

Pump Port: NW-40 Auxiliary Ports: NW-16 (2) / NW-40 (2)